

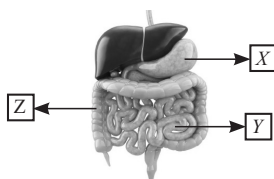
# International Olympiad of Science







## CLASS 4<sup>th</sup> SAMPLE QUESTIONS

The Actual Question Paper Contains 30 Questions. The Duration of the Test Paper is 40 Minutes.

1. Look at the diagram given below and choose the incorrect option.



- I. Food passes directly to X from mouth through food pipe.
  - II. Z is not a part of our digestive system.
  - III. Y is known as small intestine.
  - IV. No digestion of food takes place in X.
- (A) I and III                      (B) II and IV  
 (C) I and IV                      (D) III and IV
2. Sometimes in the sky we see a string of light for a very few moment. Actually these are meteors which burn on entering into the atmosphere of the earth. Which one of the following gives the required heat energy to the meteors to be burnt?
- (A) Friction  
 (B) Gravitation  
 (C) Upthrust  
 (D) All of these
3. Which one of the following is an arboreal animal?
- (A)  (B) 
- (C)  (D) 
4. Jasmine took some soil in a covered container. She heated it slowly, after some time she observed some droplets of water under the cover of the container. What does this show?
- (A) Soil has humus              (B) Soil has sand  
 (C) Soil has gravel              (D) Soil has water
5. All the stars that we see in the sky are not equally bright. Choose the correct reason for this.
- (A) Distance of the star from us  
 (B) Earth is a small planet  
 (C) Amount of light that the star emits  
 (D) Both (A) and (C)
6. Consider the following statements:  
**Micky:** Work is always done by a force.  
**Goofy:** A moving body can be stopped by applying force.  
**Donald:** We do not need energy to write answers of this question paper.  
**Who is telling the wrong fact?**
- (A) Goofy  
 (B) Micky  
 (C) Donald  
 (D) All of them
7. Consider the statements given below:  
**Krish:** Galaxy is a system of millions or billions of stars, together with gas and dust, held together by gravitational attraction.  
**Superman:** Sun is present at the center of our galaxy milky way.  
**Spiderman:** Sun is present at the center of our solar system.  
**Who is correct?**
- (A) Krish  
 (B) Krish and Spiderman  
 (C) Spiderman  
 (D) Superman and Spiderman
8. Which of these changes are not permanent?
- (A) Rusting of iron  
 (B) Burning of paper  
 (C) Growth of seedling into a plant  
 (D) Change of water into ice

9. Which of the following statements is correct about the animal shown below?



- I. It lives in jungle and feeds completely on the rotten fruits.
- II. It is a scavenger but can hunt other animals for obtaining its food.
- III. It helps in keeping its surrounding clean by eating the flesh of dead animals.
- IV. It is a kind of amphibian which lays eggs.
- V. It belongs to vertebrates.

- (A) I, II and IV                      (B) II, III and IV  
(C) II, III and V                    (D) I, IV and V

10. The dangerous ultraviolet rays from the sun are stopped in the upper part of the atmosphere. The layer which protects us from harmful ultraviolet rays, is present mainly in:

- (A) Troposphere  
(B) Hydrosphere  
(C) Stratosphere  
(D) Exosphere

**ANSWERS**

1. (B)    2. (A)    3. (C)    4. (D)    5. (D)    6. (C)    7. (B)    8. (D)    9. (C)    10. (C)