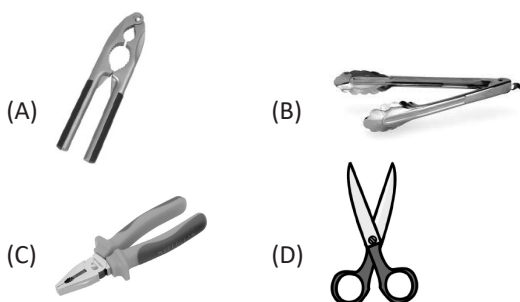


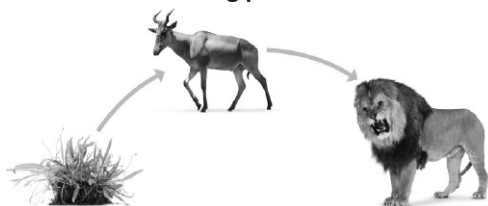
**CLASS 5th SAMPLE QUESTIONS**

The Actual Question Paper Contains 30 Questions. The Duration of the Test Paper is 40 Minutes.

1. Which of these is a third class lever?



2. Look at the following picture of food chain:



Which one of the following is a producer in the above food chain?

- (A) Deer (B) Lion
(C) Plant (D) All of these

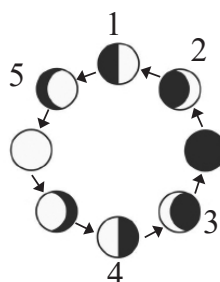
3. Which one of the following systems is responsible for transporting nutrients in whole part of our body?

- (A) Nervous system
(B) Circulatory system
(C) Muscular system
(D) All of these

4. Which of the following steps help in minimising water pollution?

- (A) Do not allow animals and humans to take bath in river and other water bodies
(B) Discharging industrial waste into water bodies
(C) Discharging untreated sewage into water bodies
(D) Washing clothes in the water bodies

5. Choose the correct option for the diagram given below.



- (A) 1–First quarter, 2–Waning crescent, 3–Waxing gibbous, 4–Last quarter, 5–Waxing crescent
(B) 1–First quarter, 2–Waxing crescent, 3–Waxing gibbous, 4–Last quarter, 5–Waning crescent
(C) 1–First quarter, 2–Waxing gibbous, 3–Waning crescent, 4–Last quarter, 5–Waxing crescent
(D) 1–First quarter, 2–Waxing crescent, 3–Waning crescent, 4–Last quarter, 5–Waxing gibbous

6. The animal given below does not have:



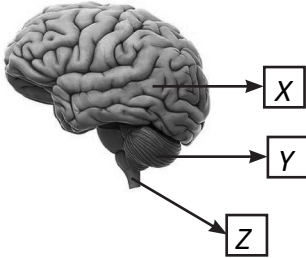
- (A) Lungs
(B) Brain
(C) Heart
(D) Gills

7. A farmer throws cow dung in the field to increase its fertility. After few days he finds that the cow dung has completely vanished from the field. How does it happen?

- (A) Cow dung mixes with the soil due to the action of chemical fertilizers
(B) Cow dung mixes with the soil due to the action of water
(C) Cow dung mixes with the soil due to the action of decomposers
(D) Cow dung mixes with the soil due to the temperature

8. A force can change

- (A) shape of an object
 (B) direction of a moving object
 (C) speed of a moving object
 (D) all of these

9. Look at the figure given below and choose the incorrect option.

- I. *X is the centre of intelligence.*
 II. *Z controls the balance of our body and keeps us in an upright posture.*
 III. *Y controls the movement of lungs and the heart.*
 IV. *X represents cerebrum, Y represents cerebellum and Z represents Medulla.*

- (A) II and IV (B) II and III
 (C) I, II and III (D) I and IV

10. The heaviest and lowermost layer of the atmosphere is called:

- (A) Stratosphere (B) Exosphere
 (C) Thermosphere (D) Troposphere

ANSWERS

1. (B) 2. (C) 3. (B) 4. (A) 5. (D) 6. (D) 7. (C) 8. (D) 9. (B) 10. (D)