

**CLASS 8<sup>th</sup> SAMPLE QUESTIONS**

The Actual Question Paper Contains 35 Questions. The Duration of the Test Paper is 40 Minutes.

1. Which one of the following is the correct order of structural organisation of an organism?

- (A) Cells → Organs → Tissues → Organ systems → Organisms  
 (B) Cells → Tissues → Organs → Organ systems → Organisms  
 (C) Organs → Tissues → Organ systems → Organisms → Cells  
 (D) Cells → Organs → Organ systems → Tissues → Organisms

2. Name the cell which has been shown in the following figure.



- (A) Muscle cell                      (B) Nerve cell  
 (C) Bone cell                        (D) White blood cell

3. Which one of the following statements is correct?

- (A) All cells of human body are of similar shape and size.  
 (B) Only muscular cells of human body have cell walls.  
 (C) Nerve cells are specialized to carry messages from one part of the body to the other part.  
 (D) Dead parts of the body like hair are not made of cells.

4. In which one of the following options, the various stages in the development of a silk moth, has been correctly arranged?

- (A) Egg → Pupa → Caterpillar → Silk moth  
 (B) Egg → Caterpillar → Pupa → Silk moth  
 (C) Egg → Silk moth → Pupa → Caterpillar  
 (D) Egg → Silk moth → Caterpillar → Pupa

5. Some terms are missing in the table given below. Choose the correct option to complete the table.

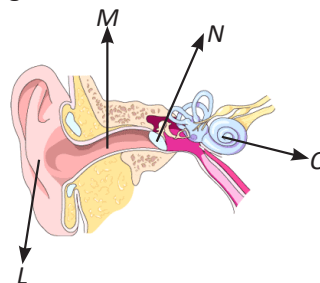
| Human disease    | Casulative micro-organism | Mode of transmission |
|------------------|---------------------------|----------------------|
| Tuberculosis     | <u>    P    </u>          | air                  |
| <u>    Q    </u> | virus                     | air                  |
| polio            | <u>    R    </u>          | air/water            |
| <u>    S    </u> | protozoa                  | <u>    T    </u>     |

- (A) P-bacteria, Q-cholera, R-virus, S-malaria, T-mosquito  
 (B) P-bacteria, Q-measles, R-fungi, S-malaria, T-mosquito  
 (C) P-bacteria, Q-measles, R-virus, S-dengue, T-mosquito  
 (D) P-bacteria, Q-measles, R-virus, S-malaria, T-mosquito

6. Match the following:

- |                      |             |
|----------------------|-------------|
| 1. Solid metal       | A. Sodium   |
| 2. Solid non metal   | B. Bromine  |
| 3. Gaseous non metal | C. Chlorine |
| 4. Liquid non metal  | D. Sulfur   |
- (A) 1-A, 2-D, 3-C, 4-B  
 (B) 1-A, 2-C, 3-D, 4-B  
 (C) 1-A, 2-B, 3-C, 4-D  
 (D) 1-B, 2-D, 3-C, 4-A

7. Which option is correct with respect to the figure given below?



- (A) L-pinna; M-eardrum, N-ear canal O-cochlea  
 (B) L-pinna; M-ear canal, N-eardrum, O-cochlea  
 (C) L-eardrum; M-pinna, N-ear canal O-cochlea  
 (D) L-eardrum; M-ear canal, N-pinna O-cochlea

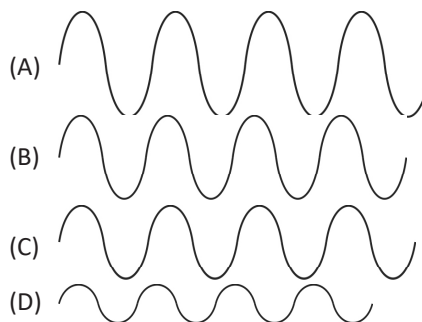
8. Given below is a list of substances and its density:

| Substance | Density   |
|-----------|-----------|
| Water     | 1.0 g/mL  |
| Oil       | 0.80 g/mL |
| AB        | 0.88 g/mL |
| Mercury   | 8.6 g/mL  |

A student fills all the above substances into a graduated cylinder. Where the AB will appear after filling all substances in the graduated cylinder?

- (A) AB will appear between Oil and Water in the graduated cylinder
- (B) AB will appear between mercury and Water in the graduated cylinder
- (C) AB will appear just below the water in the graduated cylinder
- (D) AB will appear just above the mercury in the graduated cylinder

9. In which one of the following cases loudness of the sound will be maximum?



10. Which one of the following microorganisms is an example of algae?

- (A) Lactobacillus      (B) Rhizobium
- (C) Chlamydomonas    (D) Entamoeba

### ANSWERS

1. (B)    2. (B)    3. (C)    4. (B)    5. (D)    6. (A)    7. (B)    8. (A)    9. (A)    10. (C)