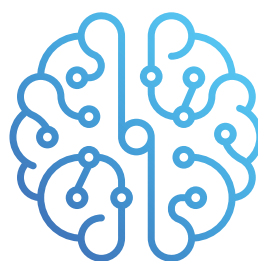




SILVERZONE FOUNDATION
New Delhi, India

STEM OLYMPIAD



Science | Technology | Engineering | Mathematics



STEM OLYMPIAD

**Geniuses are
~~born, not~~
made.**



About

SilverZone STEM Innovation Olympiads (STEM) is a noble pursuit encouraging our bright youth to take part in a cause that is much bigger than themselves. A forward-thinking movement to achieve excellence in the field of Science, Technology, Engineering and Mathematics.

Structure of the Olympiad

The Olympiad is open for Classes from 3rd to Class 10th and will be conducted in two stages.

Stage 1: National Stage

In this stage the student will compete with their counterpart from their home country. They will qualify for Stage 2 only after scoring a cutoff marking of 75%.

Stage 2: International Stage

In this stage the student will compete with all the students from other countries along with their home country. The top 100 winners scoring more than 75% in Stage 1 from every class of each country will be taking part in stage 2.

Test Paper

The language medium is English only. The examination is being conducted for all classes from 3rd to 10th with the following details.

For Classes 1-2: There will be 25 questions and the duration will be 40 Minutes.

For Classes 3-5: There will be 35 questions and the duration will be 40 Minutes.

For Classes 6-10: There will be 40 questions and the duration will be 50 Minutes.

The questions will be of objective type in nature with multiple choice answers. There is no negative marking.

Syllabus & Sample Questions

Science: Living and Non-living Things; Plants; Animals; Food, Air and Water; Human Body.

Technology & Engineering: AI- Introduction to Computer, Uses of Computer, Parts of Computer, Introduction to Artificial Intelligence, Intelligence Assessment with Logical Reasoning.

Mathematics: Numbers and its Counting, Operation of Addition and Subtraction, Money, Time and Calendar, Measuring Length, Weight and Volume, Identifying Patterns, Visualizing Shapes.

Science

1

Which one of the following has the features of living things?

A.



B.



C.

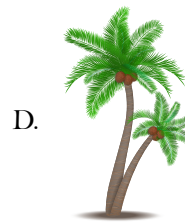
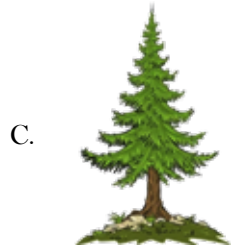


D.



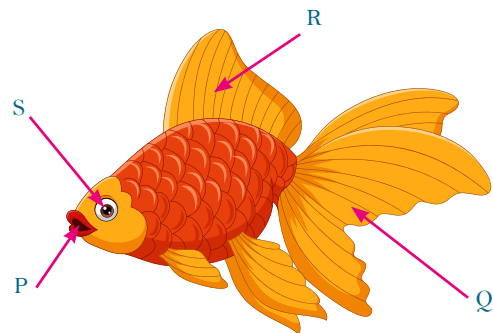
2

Identify the coconut plant from the following.



3

Which letter represents tail of the fish?

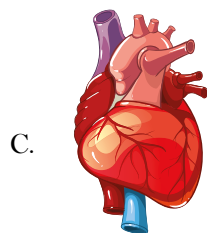


- A. P
- C. R

- B. Q
- D. S

4

What organ helps us breathe in air?



Technology & Engineering

5

Which output device is used to transfer information from a computer on paper?

A.



B.



C.



D.



6

Which of the following has in-built memory?

A.



B.



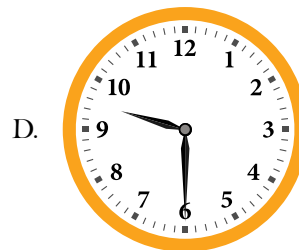
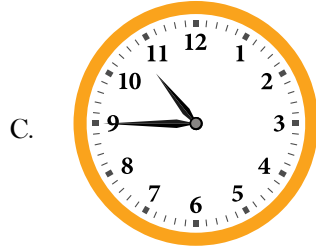
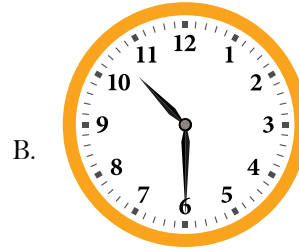
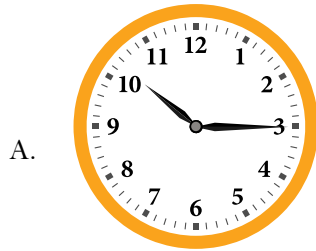
C.



D. All of these

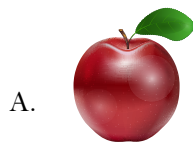
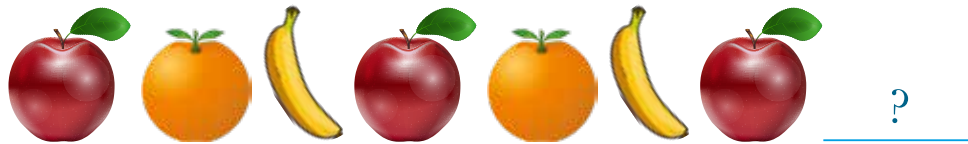
11

Identify the clock which is showing time "half past nine".



12

What should come next in the pattern?



ANSWERS

1.	(B)	2.	(D)	3.	(B)	4.	(B)	5.	(A)	6.	(D)
7.	(D)	8.	(C)	9.	(C)	10.	(D)	11.	(D)	12.	(C)



SILVERZONE FOUNDATION

New Delhi, India

STEM OLYMPIAD



Science | Technology | Engineering | Mathematics